



## Attending an RTC involving a pedestrian?

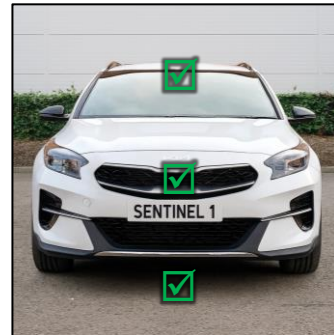


Upload 5 photos to EPR from the angles shown opposite.

Please make sure:

- **Number plate is included**
- **Any damage is visible**
- **Tyres and tarmac are visible in each photo**

Please take photos even if no damage is visible.



- ❌ Too Close
- ❌ Road Not Included
- ❌ No Number Plate

- ❌ Too Close
- ❌ Road Not Included
- ❌ No Number Plate

- ✅ All of Car Visible
- ✅ Tyres and Tarmac
- ✅ Number plate visible

Provide clinical care as usual

Take vehicle images on Electronic Patient Record

Record patient height and weight (estimate if not sure)

Let us know details of the case by scanning the QR code

